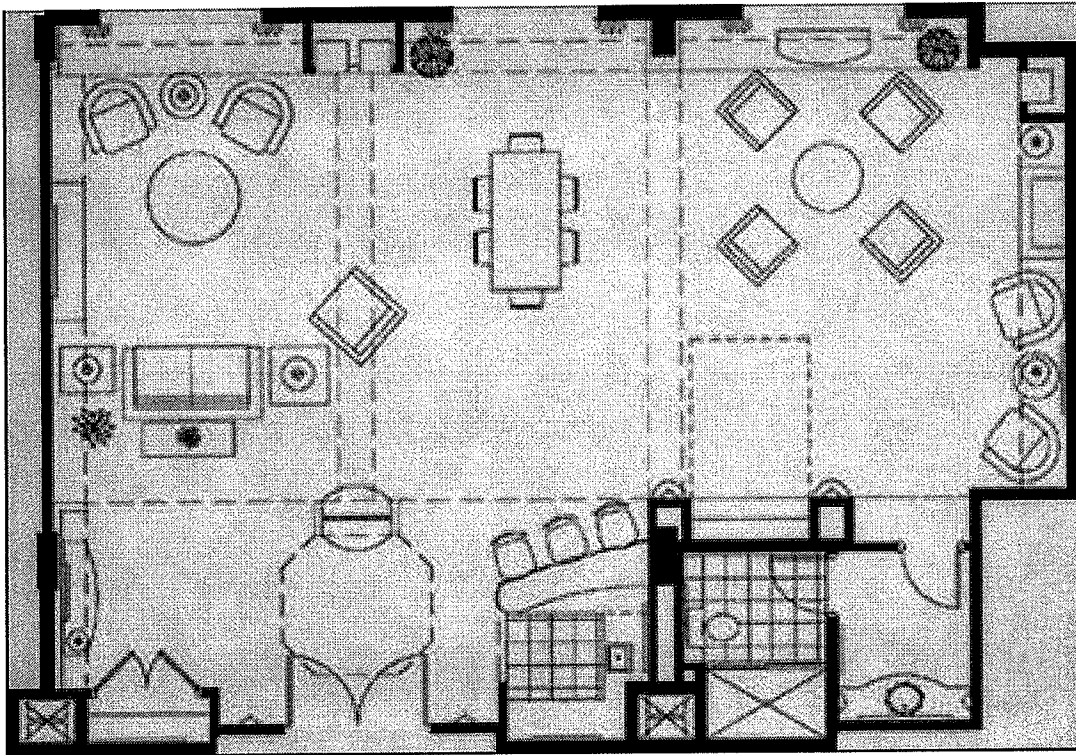


# *Hospitality Suite*

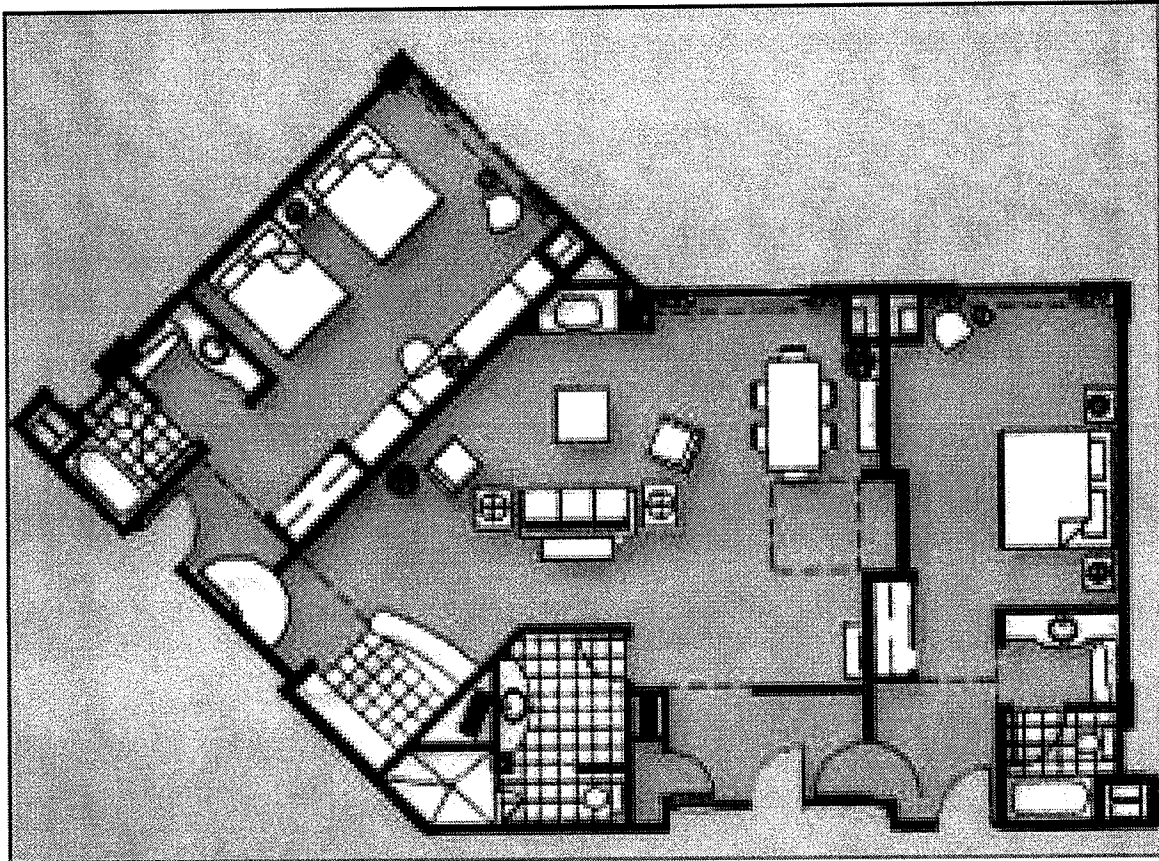


**HOSPITALITY SUITES:** Most of the Hospitalitys are located on the first floor off by themselves; however, there are a few located on the third floor. They include a living, dining area, wet bar, full bathroom, and a Murphy bed that is equivalent to a Queen bed. First floor suites have a patio looking out at the golf course or the pool. ***These are great for hospitality events.***

Two-Bay Hospitality Suites - **\$370 a night**  
872 Square Feet – Reception Capacity 35

Three-Bay Hospitality Suites - **\$580 a night**  
1308 Square Feet – Reception Capacity 45

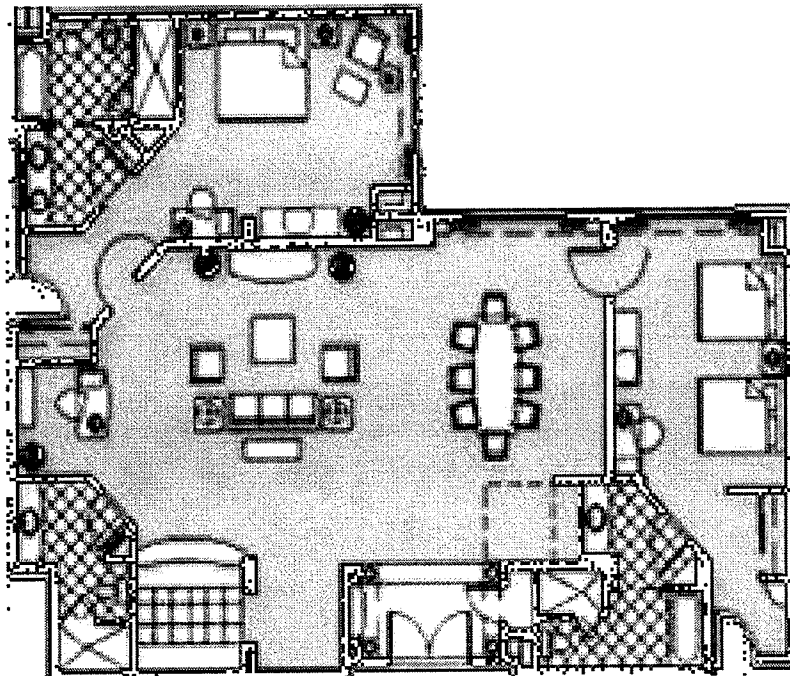
# *Executive Suite*



**Executive Parlor Suites - \$370 a night:** These suites are located throughout the hotel. The parlors have a Murphy bed and the connecting rooms that can be added either a King with one King bed or Queen with two Queen beds, or both connecting bedrooms. The bedrooms will be at the group rate each of \$190 (plus applicable taxes).

800 Square Feet – Reception Capacity 30

# *Grande Suite*



**Grande Parlors - \$580 a night:** The Grande Parlors are located throughout the hotel. The parlors have a Murphy bed and the connecting rooms that can be added either a King with one King bed or Queen with two Queen beds, or both connecting bedrooms. The bedrooms will be at the group rate each of \$190 (plus applicable taxes).

1800 Square Feet – Reception Capacity 60